



EduCare Research, inc

A nonprofit 501(c)(3) educational organization / Tax ID 46-3462644

567 West Channel Islands Blvd #425

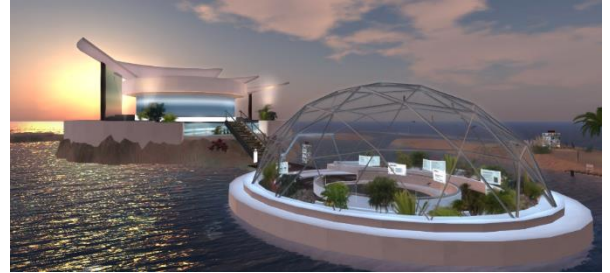
Port Hueneme, CA 93041

(805) 253-0250

<http://educares.net>

EduCare provides Virtual World learning resources serving international education, teachers, and students.

Note: To fully experience the immersive Virtual World setting you will need to install the *Second Life Viewer*, which is quick, easy, and free. Here is a *QuickStart* for your first steps in a Virtual World: [Second Life Knowledge Base](#)



How to access the EduCare campus in Second Life:

- Go to the Join Second Life page at <https://join.secondlife.com/>
Select your username, password, email address, and security questions.
You will then be able to choose your Avatar from a wide selection.
You can change your Avatar's look at any time. Select the 'free basic' membership level that allows access to all the Educare resources.
- Download and install the free Second Life Viewer for Windows or Mac OS. More advanced users may prefer the free Firestorm Viewer:
<https://www.firestormviewer.org/>
- Start the SL Viewer, login, and you will be teleported to 'Learning Island' for basic lessons in walking, flying, interacting with objects, and such.
- When you are ready, simply click this link to teleport:
<https://maps.secondlife.com/secondlife/Educare/189/124/22>
- Teleport to the EduCare campus for a relaxed introduction in the Orientation dome for fundamental platform skills.
- At the landing, click for a Landmark notecard, and join the EduCare group for full access to custom tools and events. Feel free to roam the grounds.
- Contact Kip Roffo in-world for assistance, or send an email to Steven Van Hook at steven@wwmr.org

